

FS-Series Printers (without an LCD Display)



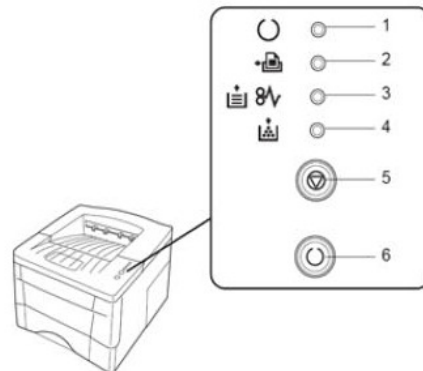
The page count or meter reading from FS-Series printers can be obtained from a **Status Page** print out.
 If your printer has an LCD Display, follow the instructions for FS Series Printers (with Display)

Use the following steps to print out a Status Page

STEP 1 Ensure the printer is switched on and in a READY state.

The green **Ready Light** (1) should be on.

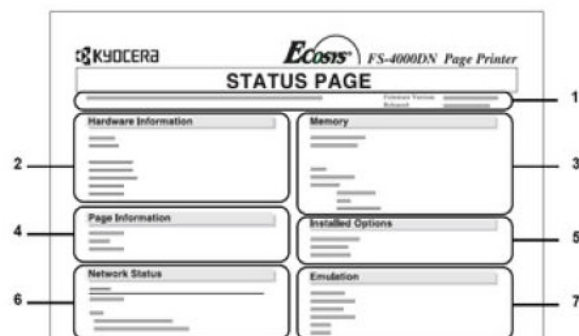
If the printer is in sleep mode (Ready light (1) is flashing slowly) press the green **GO** button (6) to wake the printer up.



STEP 2 Press and **HOLD** the green **GO** button (6) for approximately five seconds. When all the lights (1 ~ 4) illuminate in sequence, release the **GO** button.

STEP 3 The Status Page will be printed out when you release the GO button.

The total page count is available in the **Page Information** section (2)



STEP 4 The printer will return to normal print mode automatically once the Status Page has printed out.