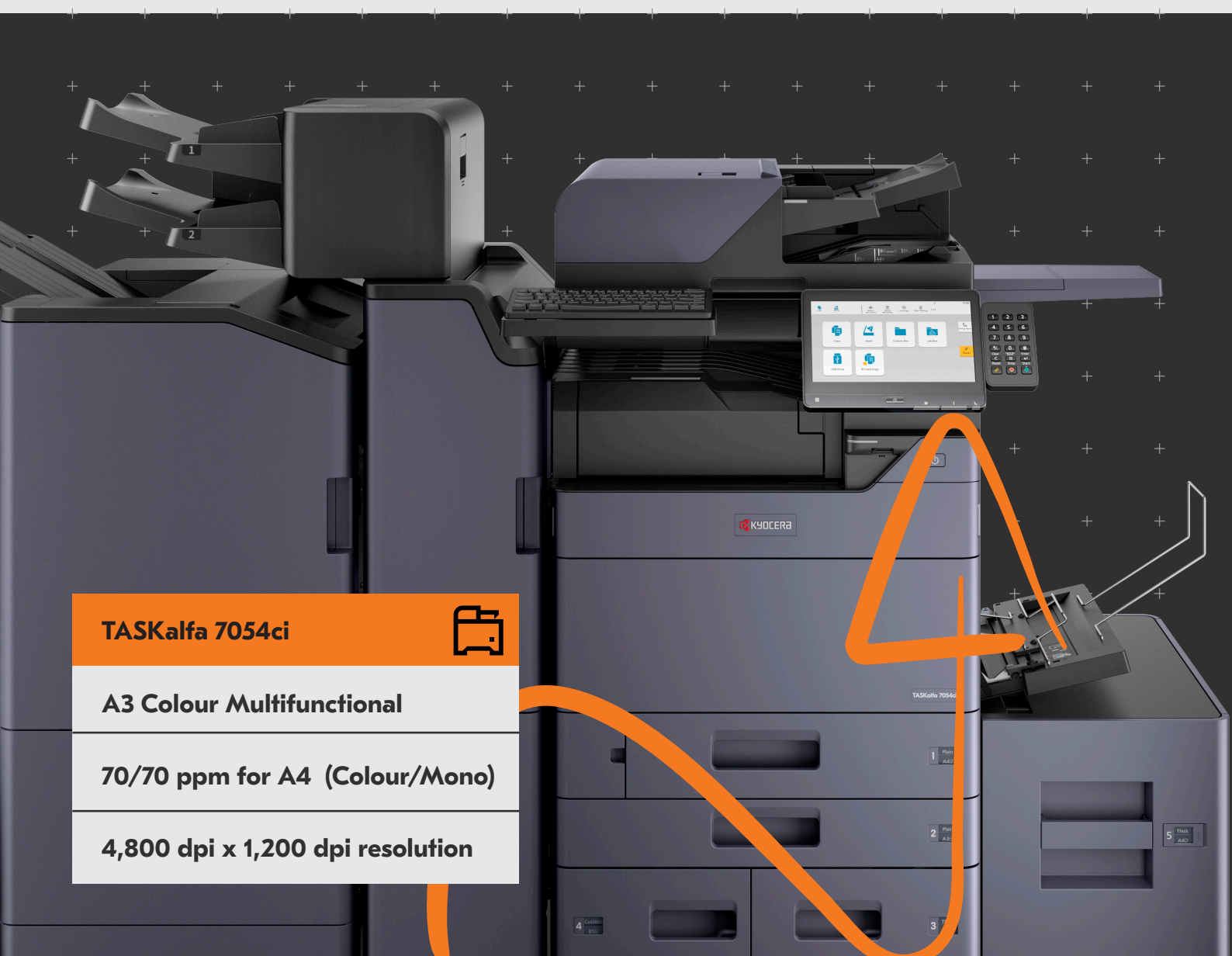


Designed to grow your business securely in an ever changing business landscape

The TASKalfa 7054ci prints perfect, stable, quality images every time in black and white or colour thanks to the newly developed toner. Focus on what matters most, and securely, with this device's latest intelligent security features.

**TASKalfa 7054ci****A3 Colour Multifunctional****70/70 ppm for A4 (Colour/Mono)****4,800 dpi x 1,200 dpi resolution**

Specifications

GENERAL

KYOCERA TASKalfa Laser Colour Multifunctional, HyPAS™ solution platform

Operation panel: 256.5 mm (10.1 inch) full-colour touch panel display, speaker for job notification, 15° - 90° swivel mounted

Engine speed: Up to 70/35 pages A4/A3 per minute, Duplex print/copy speed: 70 pages A4 per minute

Resolution: 4800dpi equivalent x 1200dpi (print) 600 dpi x 600dpi (scan/copy)

Warm-up time: 26 seconds or less

Time to first print: 3.7/5.0 seconds or less in Mono/Colour

Time to first copy: 4.1/6.2 seconds or less in Mono/Colour (DP), approx. 3.4/4.4 or less in Mono/Colour (Platen)

CPU: ARM A53 (Quad Core) 1.6GHz

Memory: Standard 4GB +64GB SSD, Optional 320GB or 1TB HDD

Standard interfaces: USB 3.0 (Super-Speed USB), 4 x USB Host Interface, Gigabit Ethernet (10BaseT/100BaseTX/1000BaseT, IPv6, IPv4, IPSec, 802.3az support), optional Wi-Fi (IEEE 802.11a/b/g/n/ac), 2 eKUIO slots for optional internal print server or for optional fax system, slot for optional Wireless LAN, Slot for optional SD Card, NFC tag

Dimensions (W x D x H): 602mm x 665mm x 790 mm

Weight: Approx. 95kg

Power source: AC 220–240 V, 50/60 Hz

Power consumption: Print Mode: 1140 W; Copy Mode: 1140 W; Ready Mode: 45 W; Lower Mode: 40 W Sleep Mode: 0.5 W

Noise (surface sound pressure level: ISO 7779 measurement distance of 1 meter)

Copying/Printing Mode in Colour: 74 dB(A) L_{pa}

Stand-by: 35dB(A)

Safety standards: TÜV/GS, CE. This unit is manufactured according to ISO 9001 quality standard and ISO 14001 environmental standard.

PAPER HANDLING

All paper capacities quoted are based on paper thickness of max. 0.1 mm. Please use paper recommended by Kyocera under normal environmental conditions.

Input capacity: Multi-purpose tray: 150 sheets, 52 - 300g/m² (Banner 136–163 g/m²), A6R - SRA3 (320 x 450 mm), Banner max. 304.8 x 1,220 mm, Standard universal paper cassette: 2 x 500 sheet 52 - 300g/m², Upper cassette A6R up to A4R, lower cassette A6R up to SRA3, Max. input capacity with options: 7,150 sheets A4

Duplex: Standard supports 60–256g/m², SRA3 to A6R

Output capacity: Standard 500 sheets face down, max. 5,000 sheets

PRINT FUNCTIONS

Controller language: PRESCRIBE

Emulations: PCL6 (PCL5c / PCL-XL), KPDL3 (PostScript 3 compatible), PDF Direct Print, XPS Direct Print and OpenXPS

Operating systems: All current Windows operating systems, Chrome OS, MAC OS X Version 10.9 or higher, Unix, Linux as well as other operating systems on request

Fonts/barcodes: 93 outline fonts (PCL), 136 fonts (KPDL 3), 4 fonts (Calibri), 4 fonts (Cambria), 1 Bitmap font, 45 types of one-dimensional barcodes, 1 type of two-dimensional barcode (PDF417)

Print features: Encrypted PDF 2.0 Direct Print, IPP printing, e-mail printing, WSD print, secure printing via SSL, IPsec, SNMPv3,

quick copy, proof and hold, private print, job storage and job management functionality, Super Resolution

Mobile printing support: AirPrint, Mopria, NFC, Direct Wi-Fi (optional), MyPanel and KYOCERA Mobile Print app for iOS and Android, Microsoft Cloud printing

COPY FUNCTIONS

Max. original size: A3/Ledger

Continuous copying: 1–9,999

Zoom range: 25–400% in 1% steps

Preset magnification ratios: 5 Reductions/5 Enlargements

Exposure mode: Manual: 17 steps

Image adjustments: Text + Photo, Photo, Text, Diagram/Map

Features: Scan-once-copy-many, electronic sort, 2in1, 4in1, image repeat, page numbering, cover mode, booklet copy, interrupt copy, form overlay, margin shift, auto cassette change, skip blank page, ID copy, Handwriting erase and highlight

SCAN FUNCTIONS

Functionality: Scan-to-email, Scan-to-FTP, Scan-to-SMB 3.0, Scan-to-USB Host, Scan-to-box, Network TWAIN, WSD scan (WIA Driver Network), DFS Scan, DSM Scan

Scan speed: 274 ipm (300 dpi, A4, duplex, with DP-7160/7170)

Scan resolution: 600, 400, 300, 200 dpi, 256 greyscales per colour (1,200 dpi via TWAIN and WIA driver only)

Max. original size: A3, Ledger

Original recognition: Text, photo, text + photo, Light Text / Fine Line, optimised for OCR

File types: TIFF, PDF, PDF/A, JPEG, Open XPS, Encrypted PDF, High compression PDF, PDF/A-1a/b, PDF/A-2a/b/u, Searchable PDF(Optional), MS Office file(Optional)

FAX FUNCTIONS (OPTIONAL)

Compatibility: ITU-T Super G3

Modem speed: Max. 33.6 kbps

Transmission time: Less than 3 seconds (IBIG)

Scanning speed: 2.0 seconds or less

Maximum original size: A3/Ledger, Banner: 1,600mm

Compression method: JBIG, MMR, MR, MH

Features: Network faxing, rotate transmission, rotate reception, encrypted transmission and reception, duplex fax reception, memory reception, mailbox, remote diagnostics, polling transmission and reception, broadcast, Optional Internet-fax, dual fax with second fax system 12

CONSUMABLES

Average continuous toner yield in accordance with 5% coverage A4

TK-8559K Toner Kit: Microfine toner black for 40,000 pages A4

TK-8559C, TK-8559M, TK-8559Y Toner Kits: Microfine toner cyan, magenta, yellow for 24,000 pages A4

Staples: SH-10: 5,000 x 3 staples for BF-730, DF-7120, BF-9100,

SH-12: 5,000 x 3 staples for DF-7140, SH-14: 5,000 x 5 staples for DF-7150

WT-8500: Waste Toner Bottle: 40,000 sheets (in accordance with 5% coverage, b/w : colour = 7:3)

OPTIONS

Fax System 12

Internet Fax Kit (A) AC

Scan Extension Kit (A) AC: Scan to searchable PDF solution (embedded OCR), convert to PDF or MS Office (docx, xlsx, pptx)

Printing System 17: Fiery Controller

Printing System Interface Kit 15B: Interface board for Fiery

DP-7150: Document Processor (Reversing), 140 sheets, 35–160 g/m² (simplex), 50–120 g/m² (duplex), A6R–A3, Banner up to 1,900 mm

DP-7160: Document Processor (one-path duplex scanning), 320 sheets at 50 - 80 g/m², 35–220 g/m² (simplex), 50–220 g/m² (duplex), A6R–A3, Banner up to 1,900 mm

DP-7170: Document Processor (one-path duplex scanning with ultrasonic sensor), 320 sheets at 50 - 80 g/m², 35–220 g/m² (simplex), 50–220 g/m² (duplex), A6R–A3, Banner up to 1,900mm

DT-730(B): Document tray

PF-7120: Side Deck: 3,000 sheets, A4, 60–300 g/m²

PF-7140 Paper feeder: 2 x 500 sheets, 52–300 g/m², A6R–SRA3

PF-7150 Paper feeder: 2 x 1,500 sheets, A4, 52–300 g/m², A4, B5, Letter

DF-7120* Document finisher + AK-7110: 1,000 sheets A4, 52–300 g/m², A6R–SRA3, Stapling up to 50 sheets A4 or 30 sheets A3 at 3 positions

DF-7120* Document finisher + AK-7110: Main tray: 4,000 sheets A4, Sub tray: 200 sheets A4, 52–300 g/m², A6R–SRA3, Stapling up to 65 sheets A4 or 30 sheets A3 at 3 positions

DF-7150* Document finisher + AK-7110: Main tray: 4,000 sheets A4, Sub tray: 200 sheets A4, 52–300 g/m², A6R–SRA3, Stapling up to 100 sheets A4 or 50 sheets A3 at 3 positions

AK-7110: Attachment kit for DF-7120, DF-7140 and DF-7150

100 sheets, 52–300 g/m², A6R–SRA3

* Bridge unit AK-7110 is required when using a finisher

ZF-7100: Z-folding, Bi-folding, Inner and Outer tri-folding

IS-7100: Inserter, Cover and Backing sheet insertion, 52–300 g/m², A6R–SRA3

AK-7120: Attachment kit for Z-folding unit

PH-7C: Punch unit for DF-7120, DF-7140 and DF-7150

2-hole/4-hole, 52–300 g/m², A5R–A3

MT-730(B): Mailbox sorter for DF-7140

7 bins x 100 sheets A4, 50 sheets A3/B4, 60–163 g/m²

BF-730: Booklet and tri-folding unit for DF-7140

BF-9100: Booklet and tri-folding unit for DF-7150

JS-7100: 100-sheet internal job separator, 52–300 g/m², A6R–SRA3

JS-7110: 250-sheet Inner shift tray, 52–300 g/m², A6R–SRA3

Banner Guide 10: Banner paper feeding guide, 10 sheets

HD-15: HDD 320 GB

HD-16: HDD 1 TB

NK-7120: Numeric keypad

Keyboard Holder 10

UG-33 AC: ThinPrint support

UG-34 AC: Emulation (IBM Proprinter/EPSON LQ-850 LinePrinter)

USB IC Card Reader + Card Authentication Kit (B) AC

IB-37: Wireless Network Interface (USB : 5GHz/2.4GHz)

IB-50: GB-Ethernet board 10 BaseT/100 BaseTX/1,000 BaseT

IB-51: Wireless LAN Interface (802.11b/g/n)

Platen cover Type (E)

1290/30: Cabinet

The TASKalfa 7054ci incorporates extremely durable components that guarantee efficient and reliable operation to meet the demanding requirements of busy office environments. The TASKalfa 7054ci provides effective productivity and maximum flexibility, whilst ensuring minimum impact on the environment.



KYOCERA Document Solutions Partner

SEPTEMBER2021DSTASKALFA7054CI/VER1.0

KYOCERA Document Solutions Australia
Ph: 13 59 62
www.kyoceradocumentsolutions.com.au

KYOCERA Document Solutions New Zealand*
Ph: 0800 459 623
www.kyoceradocumentsolutions.co.nz



kyoceradocumentsolutions.com.au

Kyocera Document Solutions does not warrant that any specifications mentioned will be error-free. Specifications are subject to change without notice. Information is correct at time of going to press. All other brand and product names may be registered trademarks or trademarks of their respective holders and are hereby acknowledged.